

Project Update

February 2023



Works continue in all weathers to ensure flood protection in 2023



Reimagined Wee Haugh

Take a look at the new layout of Wee Haugh, expected to be ready this summer.

Page 3 & 4

Project Art Taking Shape

Turning our attention to how project art is progressing within the Scheme.

Page 3 & 4

Mansfield Road Closure Update

Key safety measures in place during the phased road closure at Mansfield Road.

Page 6

Protecting and Enhancing Hawick

Delivering Full Flood Protection by the End of 2023



On Track to Meet Our Target

As we head into 2023, we can look back at the considerable work delivered and the level of flood protection now in place across the town. This is the busiest winter of construction for the project as we gear up to ensure full protection to Hawick from floods up to a 1 in 75 year level by the end of the year.

Major milestones were reached in 2022 with the upgraded Commercial Road reopening on time in November. Additionally, 2022 saw the opening of the two new, wider Victoria and Lawson Footbridges with Mansfield soon to follow.

As the Active Travel Network is closely linked with flood protection, many work sections are completed or underway. With Planning Permission for Weensland footbridge only granted in December 2022, construction of the Active Travel Paths and the new footbridge will continue into 2024.

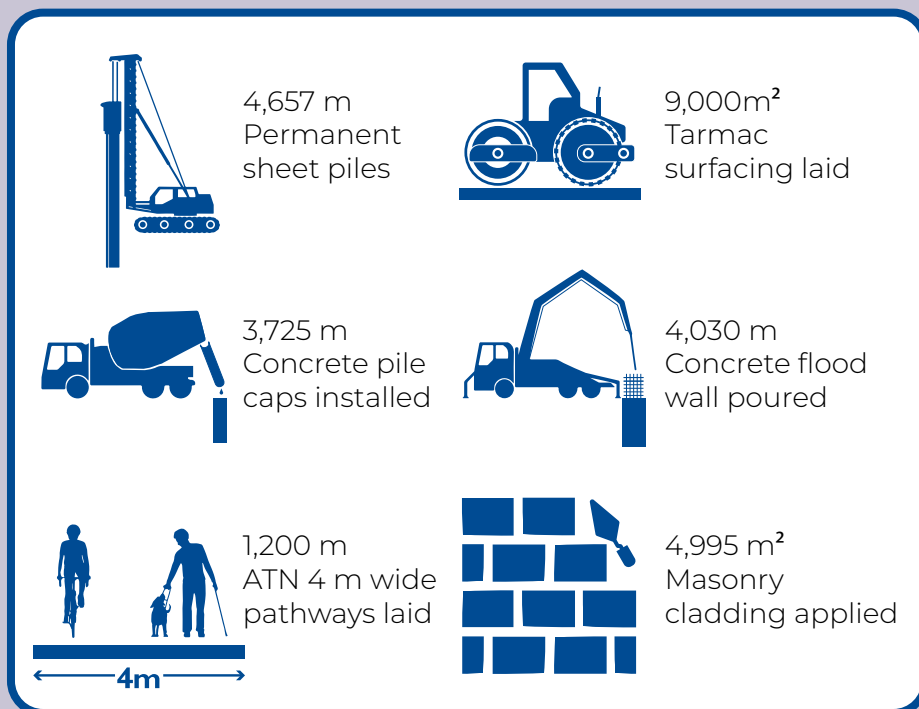
Nonetheless, it is the lengths of flood wall constructed that will make the biggest difference to households and businesses along the River Teviot. The technical figures detailed below show the sheer scale of works undertaken since June 2020.

The year began with a severe weather event, prompting the Scheme to commit a large effort to ensure that the new built defences, along with temporary barriers, provided sufficient flood protection. All available data indicates at least some flooding was avoided because of the new flood walls.

We have faced many challenges delivering this complex project, and this year will be no exception. The Project Team remain committed to completing the project on programme and on budget, and would like to thank you for your patience and support throughout this period.

Conor Price
Project Director

Technical Progress



Setting up shutters for concrete pour



Shutters being lifted into place

Winter Working

Freezing temperatures at the start of the year halted some construction. Tasks such as concrete pouring, surfacing and stone cladding had to be paused. Yet, work continues in all weathers, with the 2022/2023 winter period being the most productive to date.

The inclusion of winter in-river platforms has allowed construction works at Teviot Road, Mansfield Road and Glebe Mill Street to continue over the winter months. Allowing the Project Team to keep progress on track.

Project Art Taking Shape

With the vast majority of flood wall constructed or underway, attention can now be turned to some of the softer, but equally important, elements of the scheme such as project art. Keep a look out around the town.

As reported in our June 2020 Project Update, the key art elements developed with townsfolk include:

- Bill McLaren Quote – As a nod to one of Hawick’s sporting personalities, his famous quote, “as slippery as a baggy up a border burn” is proudly cast into the floodwall on Commercial Road. – The quote was installed in the summer of 2022.



One of Bill McLaren’s famous quotes set in stone



Andrew Mackenzie’s scale model of double glass viewing panel

- The Wittergate – As part of the newly landscaped Common Haugh, the Wittergate will feature two illuminated Corten steel panels sitting to each side of the flood gate on the dry side of the flood wall. – Programmed to be installed this month.
- Glass Panels – Thirty of the glass panels installed in the flood walls will feature specially commissioned art and river maps showing many of the tributaries that flow into the River Teviot. Sitting alongside these panels will be words and poetry reflecting Hawick’s heritage. – Installation of the glass panels commenced in January.
- Tributrees – To compliment the river tributaries detailed on the glass panels, a tree will be planted on each of the thirteen tributaries. These ‘tribu-trees’ will be given an OS map reference, presented for orienteers to locate. – Tree planting will be carried out in the Spring.
- Information Plaques – To provide a written background for each of the art works to locals and visitors. Strategically located information plaques will highlight the above elements in more detail. – To be installed at the end of the works.

Flood Gates for Access and Protection

Flood Gates perform a vital role in the overall flood protection scheme. For much of the time, in ordinary conditions, most flood gates will stay open to ensure access to the river corridor and footbridges. During a potential flood event when river levels are expected to rise, the flood gates will be securely locked closed by Scottish Borders Council. They are designed to retain flood water to the specified flood defence level.

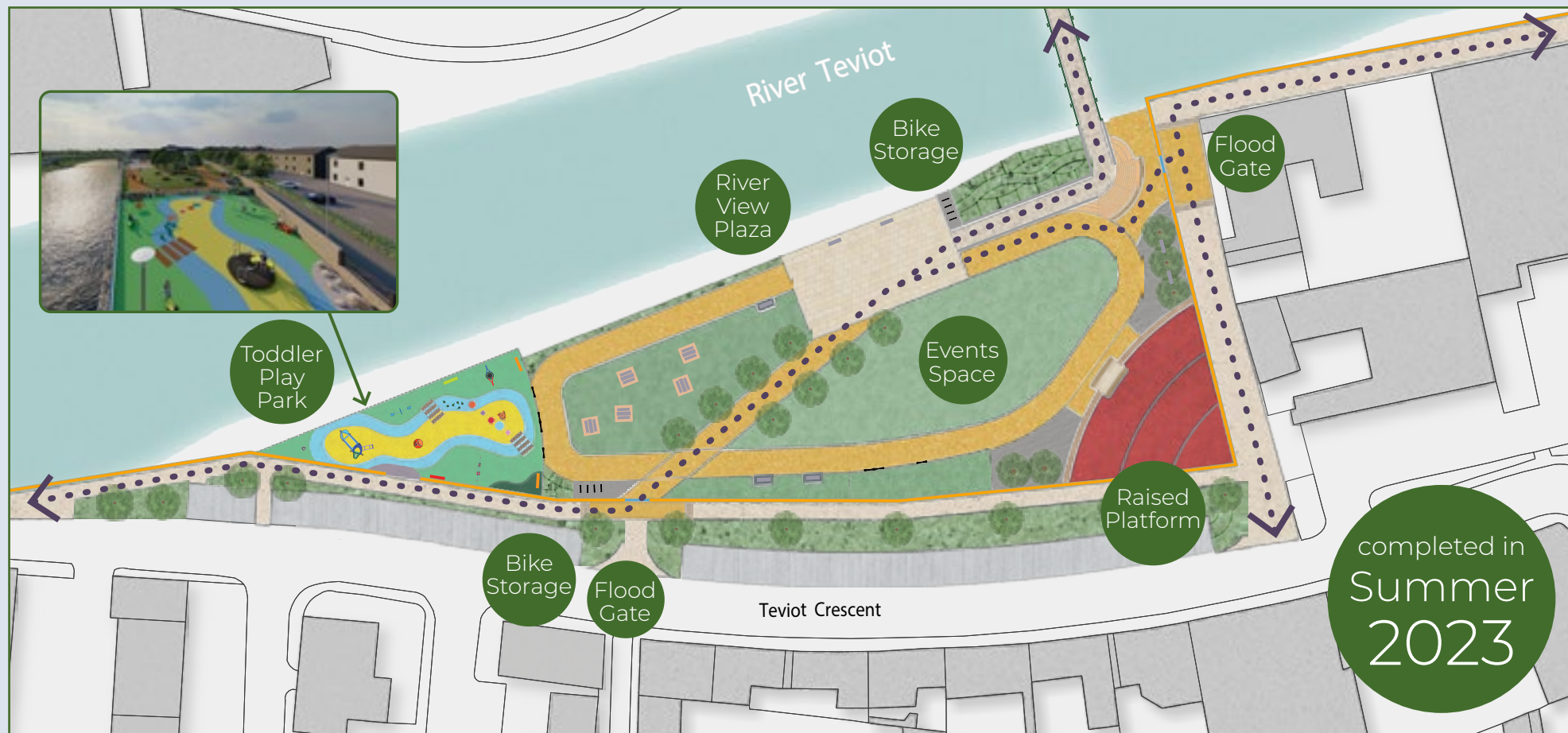
Flood gates consist of a single-hinged aluminium panel that swings between its open and closed fixed positions. Once installed they are tested on site to determine that the gate and seals operate successfully. This performance inspection must take place before adjoining stone cladding is applied to the wall.

Reimagined Wee Haugh

The Wee Haugh provides a vital connection between the High Street and Commercial Road. This will be maintained via a flood gate located at the bottom of Baker Street and direct path access to Victoria Footbridge.

This area will be enhanced with a toddler play park, picnic benches, seating, Active Travel Network, bike storage, plaza and dedicated events space. Trees will be planted along the central path to recreate the avenue there previously.

The new layout should prove popular during the annual Reivers festival, with markets held throughout the year.



Common Haugh flood gate pre testing

For the Flood Gates to be successfully tested, the team need to replicate a scenario similar to a flood event. This involves the retaining of a large volume of water for several hours, at the full designed flood protection level. Then, the volume of leakage through the gate can be calculated. If the leakage rate is too high, then the test will fail. Remedial works and re-testing will take place until the flood gate demonstrates satisfactory performance of the gate and seals. This then allows the flood wall and surrounding landscaped area to be completed.

Waverley Walk Progress & Other Active Travel Network Updates

One of the longest sections of the Hawick Active Travel Network, Waverley Walk, is progressing well.

Due to the winter flood warning, the team working on Waverley Walk had to be moved onto emergency response preparations in the town. This meant that the surfacing works had to be moved back by a few weeks. Now, the surfacing is complete for most of the length of the old Railway Line.

The next steps are to install upgraded lighting pillars and continue creating new paths



Waverley Walk surfacing taking place last month



Newly installed lighting at Volunteer Park

to connect Waverley Walk to Hamilton Road. After that, the Active Travel Network will create a new link from Hamilton Road to Wilson Drive. As the hill leading up to Wilson Drive is quite steep, there will be resting places with benches, newly landscaped areas and lighting created.

The Project Team will also be going back to the Burnfoot community to further understand what other

improvements can be made in the area. You can catch us at the next Burnfoot Community Council meeting taking place in March.

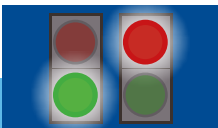


Another part of the Active Travel Network path, at the Volunteer Park, had the lantern heads put on and the lighting is now fully functional there. The only part that is left to complete is the landscaping, which will take place in April.

Community Benefits

 53 Local people employed for more than 12 weeks	 Sponsored or donated to 169 community projects/ events	 £1.5m spent locally in the Scottish Borders
 38% Local labour by percentage of work force	 197 Engagements with community groups	 £106K community investment
 2 Apprentices, 5 Graduates and 18 work placement opportunities	 31 Support activities for schools and colleges	 Engaged with 3312 school & nursery pupils

Road Safety is Paramount During Mansfield Road Works

A road closure is in place at Mansfield Road adjacent to the Scottish Water Treatment Works. The Mansfield Road works have been split into three phases to minimise the duration of traffic being routed through Burnfoot. Previous traffic calming measures in this location remain in operation. The following road safety measures have been implemented along Burnfoot Road whilst it is used as the diversion route:

 <p>Two Push button (puffin) crossings are located next to the shops and Community Hub. These will turn the lights to red, signalling drivers to stop to allow pedestrians to cross.</p>	 <p>Additional 20 mph signage and flashing traffic signs to remind drivers of the speed limit in a residential area.</p>
 <p>Routine visits by the Community Action Team to ensure drivers are adhering to measures implemented.</p>	 <p>Restriction of main works construction traffic using this diversion. Access to site will be via Mansfield Road, where possible.</p>






Contacting the team

There are a number of ways you can keep up-to-date with the Hawick Flood Protection Scheme or contact the team to ask questions or provide comments:



 www.hawickfloodscheme.com
 hawickfloodps@scotborders.gov.uk

 @HawickFPS
 @hawickfloodprotectionscheme
 @hawick_flood_protection

