

# Project Update

September 2023



Final  
Section of  
Flood Defence  
On  
Programme



## Completion Timeline

Looking ahead to key dates for the end of the Project.

**Pages 3 & 4**

## Trees Around The Scheme

Detail on tree varieties to be planted throughout the town.

**Pages 3 & 4**

## Hawick's Wee Explore Activity

Children's competition winner revealed, and a new activity.

**Page 5**

**Protecting and Enhancing Hawick**

## Summer Progress Keeps Us On Target

### Flood Protection To Be Acheived This Year

It is clear to see the extent of recent progress made as work has accelerated in the summer months. We find ourselves increasingly closer to the ultimate objective of safeguarding Hawick from future flooding. The Scheme is now in the last month of the final in-river working season of the Main Works Programme. Increased resource has been committed along the length of the river to bring this project to completion. The Project remains on course to deliver full flood protection to the town by the end of this year.

At some locations where the flood protection is complete, the river environment is beginning to thrive with the newly planted vegetation establishing itself well. This can be seen in areas such as Commercial Road, Mansfield Road, Duke Street and Common Haugh. Further planting of trees, shrubs and wildflower will continue into the autumn months.

It is great to see some parts of the Active Travel Network already being utilised by the people of Hawick. Waverley Walk is once again being used by both locals and visitors for getting around and enjoying daily activities. The upgraded path has even been used for cycling events such as Doddie Weir Charity cycle and, hopefully, many more to come. The winner of our colouring competition had a great time scooting around Waverley Walk when he got his prize. You can see more about this on [page 5](#).

The first of the newly reimagined community spaces, Common Haugh, nears closer to being handed back to the people of the town. The Wee Haugh is also taking shape as a specialist contractor has been working on finishing the park with a quick turnaround. We look forward to returning this area to the community to enjoy once again.



There have been many changes taking place at Weensland, with the flood defence embankment swiftly taking shape. Across the river, the preparation works for the new footbridge installation started on Lower Mansfield Road. The Weensland footbridge is scheduled to arrive in Hawick in January, with installation taking place shortly after, in February 2024.

I would like to express my appreciation for the ongoing support that the Scheme receives from the people of Hawick. The objective to protect the town for this coming winter and for the future is close to being realised. Once again, I ask for your continued patience during these last few months so that an enhanced and protected Hawick can be returned to you.

**Conor Price**  
**Project Director**

## Charity Cycle for Doddie's Ride Along Waverley Walk Active Travel Network

Charity organisers of Doddie's Ride selected the newly upgraded path of the Hawick Active Travel Network at Waverley Walk as part of two of their routes. On Sunday 2nd July, the cyclists made their way along the recently improved 4-meter-wide path.

Riders made a refreshments stop at the Hawick Rugby Football Club. Many spectators came out to show their support in the town. The My Name's Doddie Foundation raises funds for research, support and awareness for Motor Neuron Disease.



**Charity cycle along Waverley Walk**

# Scheme Completion Timeline

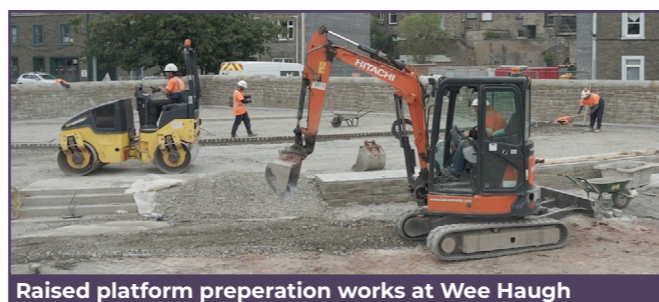
The summer months have been a busy period for construction of the Scheme, with many areas coming to fruition.

**Waverley Walk to Hamilton Road ATN**  
Pathway opened. ✓

**70 glass panels installed**  
they will be tested to verify the seals operate successfully. ✓

**3 x Footbridges installed**  
with preparations underway to install 4<sup>th</sup> early next year. ✓

**Wee Haugh Park**  
The re-imagined multifunctional park at Wee Haugh is quickly evolving. The new layout will include: a new toddler play park; a grass park area; and a paved outdoor event space.



Raised platform preparation works at Wee Haugh

**Full Flood Protection**  
Full flood protection for the River Teviot and the Slitrig will be achieved from floods up to a 1 in 75 year level. This means full flood protection for the Hawick Scheme will be reached by the end of the year.

**Weensland Footbridge Installation**  
A 4m wide footbridge will connect Weensland with Hamilton Road on the Mansfield Road side of the river. This will be the fourth footbridge of the Scheme.

**Active Travel Network Works Completion**  
The enhanced shared-use cycleway and footpath along the entire length of the project will be achieved.

**Main Works Maintenance**  
Remedial works to correct defects in the Main Works Contract construction will be carried out following inspection so that all aspects of the works are in accordance with the contract.

## Straw Bales at Slitrig



Straw bales on site before installation

Cadged straw bales were installed in the river by the Slitrig. The bales were placed in hessian sacks within wire-frame cages to keep the straw together. These were positioned downstream of works to act as a filter for floating sediment; to avoid silt-laden water escaping downstream. This should remove the potential of polluting the river from accidental silt release. On completion all straw bales will be carefully removed.

# Hornshole Greenway Donate 50 Oak Trees

The Hawick Flood Protection Scheme was recently donated 50 young oak trees by the Hornshole Greenway Community Group. Grown from Hornshole acorns, the trees will eventually be planted throughout the town, increasing the total number of trees to be replanted throughout the Scheme. This signifies the importance of engagement in working with the community to achieve a greener environment as well as providing other multiple benefits. As the trees mature, these benefits will include improving the air quality, protecting from the heat by providing shade and creating habitat for wildlife.



Project Director, Conor Price, receiving donation of 50 oak trees

donation, Hornshole Greenway spokesperson, Gordon Muir, said, "having been caught in the spearhead of the flag captured at Hornshole in 1514, oak leaves have huge symbolic meaning in Hawick. Just as the youth of Hawick saved the town from imminent destruction in centuries past, the Flood Protection Scheme is doing the same for today and centuries to come."

Explaining the historic significance behind the

# Tree Planting

As part of the Scheme's environmental commitments, 2.5 trees are to be planted for every tree removed. Many of these are to be planted at the three parks to enhance the natural landscape in these community spaces.

At the Common Haugh the lime trees *Tilia x euchlora* to the western end have been matched. Additionally, a new streetscape variant of lime tree *Tilia cordata* "Greenspire" are introduced along Albert Road.

For the Wee Haugh, White barked Himalayan birch *Betula Utilis jacquemontii* flank the outside of the wall between the housing and the park. There will be an avenue of limes through the centre of the park and Japanese cherry trees *Prunus Kanzan* either side of the new performance area.

The new Weensland Park is more natural with a mix of native trees

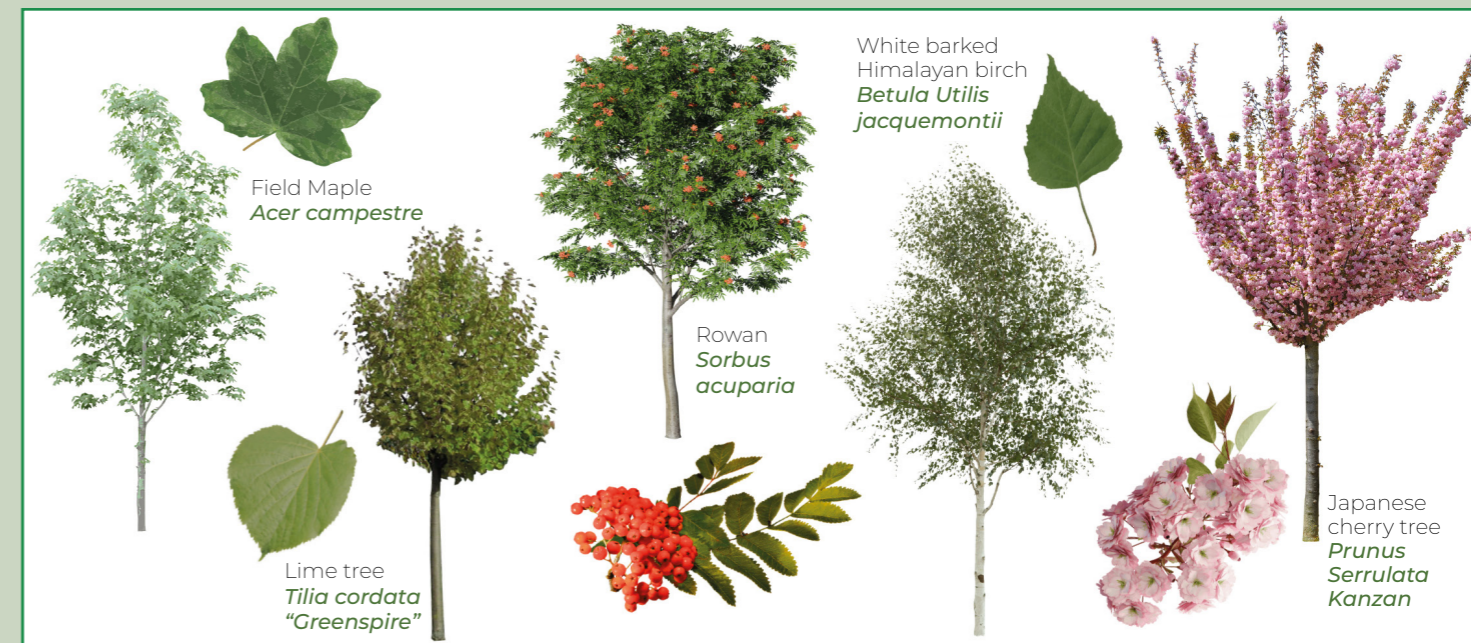
in groups including; field maple *Acer campestre*, wild cherry *prunus avium* and rowan *Sorbus acuparia*.

New street planters are positioned along Duke Street and Glebe Mill Street, and will include Field Maple "Streetwise" *Acer campestre* and Lime *Tilia cordata*. These variants will have a street presence but do not get too large, so retaining unobstructed views towards the river.

In addition to specific areas, a mix of new trees are planted along the riverbanks, to revegetate, create habitat and stabilising against erosion.



Mixed planting along the riverbank

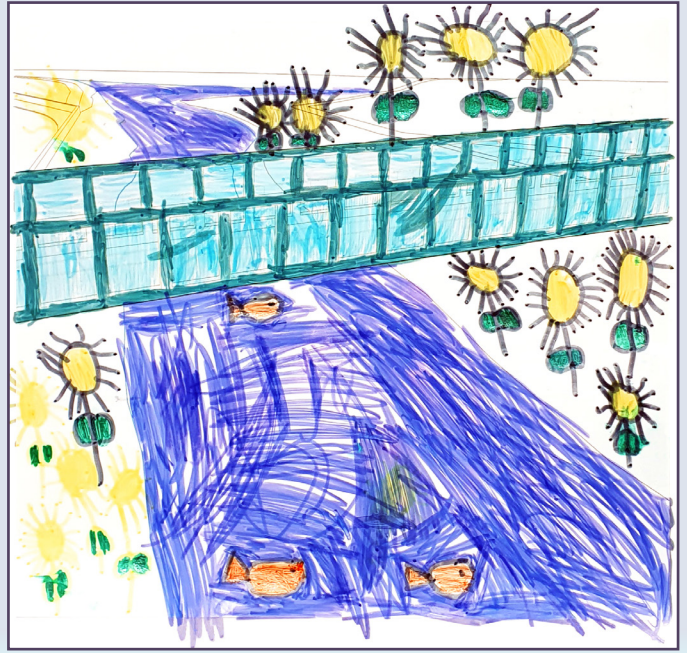


Examples of the various species of trees to be planted in specific locations throughout the Scheme



Competition winner scooting along Waverley Walk

Congratulations to Harry Williams for submitting the winning entry to our colouring-in competition! He was happy to receive his scooter.



Identify the different leaves by colouring in each type a different colour:



Have you ever made a leaf rubbing?



step 1  
Find a leaf

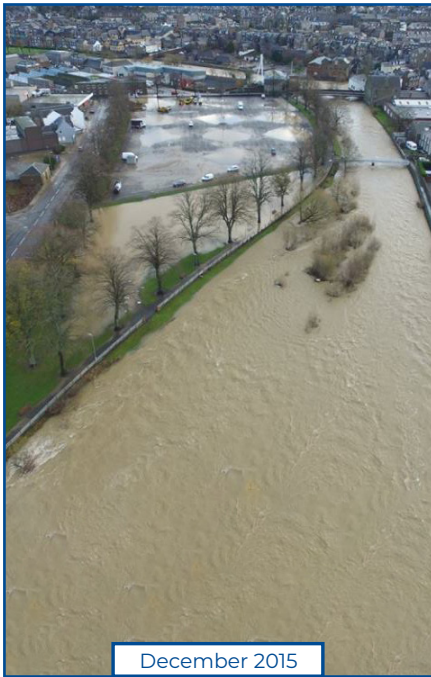


step 2  
Lay a sheet of paper over the leaf

step 3  
Using a pencil, pastel or crayon gently shade over the leaf



# The Transformation of Common Haugh



December 2015



March 2021



September 2021



August 2022



February 2023



August 2023

The newly transformed park at Common Haugh is really starting to take shape. Here is a look back through the years of construction of this important part of town. The area is now a freshly landscaped community space with tiered gardens and picnic benches providing a multifunctional public space.

A new viewing platform is located at the far end of the park. Here, town folk and visitors can look out to the Coble Cauld, where the river is always busy with wildlife. Annually this location will also offer a great vantage point to witness the Flag dipping ceremony at the Common Riding event.

Routes have been improved via the Active Travel Network; with wider paths, ramped access and the replacement of Lawson Footbridge.

## Contacting the team

There are a number of ways you can keep up-to-date with the Hawick Flood Protection Scheme or contact the team to ask questions or provide comments:



[www.hawickfloodscheme.com](http://www.hawickfloodscheme.com)  
[hawickfloodps@scotborders.gov.uk](mailto:hawickfloodps@scotborders.gov.uk)

[@HawickFPS](https://twitter.com/HawickFPS) (formerly Twitter)   
[@hawickfloodprotectionscheme](https://facebook.com/hawickfloodprotectionscheme)   
[@hawick\\_flood\\_protection](https://instagram.com/hawick_flood_protection)



Scottish Government  
 Riaghaltas na h-Alba  
[gov.scot](http://gov.scot)

