

Project Update

May 2023



Delivering Your Future Landscape

Focused on Finishing Works



Biodiversity Park at Weensland

Take a look at the new scheme layout for Weensland Biodiversity Park.

Page 2 & 3

Hawick's Wee Explore Activity

A children's activity tear-off page with the chance to *win a scooter*.

Page 4 & 5

Connecting to the River

Installing glass panels offers glimpses to the river corridor and to the opposite riverbank.

Page 6

Protecting and Enhancing Hawick

Delivering Your Future Landscape

Flood Protection by the end of 2023

Now that we are at the beginning of the final in-river working season of the project, from May to September, the ramping up of progress will be clear to see. Summer is the busiest time of the year for construction on the Scheme as it allows the necessary access to the river corridor and weather conditions are more favourable.

Residents will also start to see areas looking more finished with footpaths and amenity areas handed back to the town. The finishing works include the completion of stonework surrounding the glass panels, surfacing of footpaths and sections of the Active Travel Network. Both hard and soft landscaping continues to progress across the town which includes installation of street furniture and the planting of trees, shrubs and wildflowers.

The reopening of Waverley Walk really improves the connection between the town and Burnfoot allowing people a safer traffic-free route to walk, cycle, wheel and scoot. This connection



will only be enhanced with all the individual measures to be implemented through Burnfoot and the new footbridge crossing over to Weensland due for installation in early 2024. For a chance to win a children's scooter, please go to page 4 and encourage a child to enter our colouring in competition.

The project remains on track to provide the promised flood protection to the town by the end of the year. I wish to extend my gratitude for your sustained resilience in the face of much disruption. Now that we can begin to see the results across many areas of this extensive long-term project coming to fruition we are ever closer to achieving the goal of protecting and enhancing Hawick for generations to come.

Conor Price
Project Director

Most Promising Apprentice Winner

At the CECA Scotland 2023 award ceremony, the trade body for civil engineers, Christy Dickson won the award for the "Most Promising Apprentice".

Christy joined McLaughlin & Harvey in 2019 and has been based at the Scheme site since September 2020. This award has brought delight and recognition both to Christy and the team.



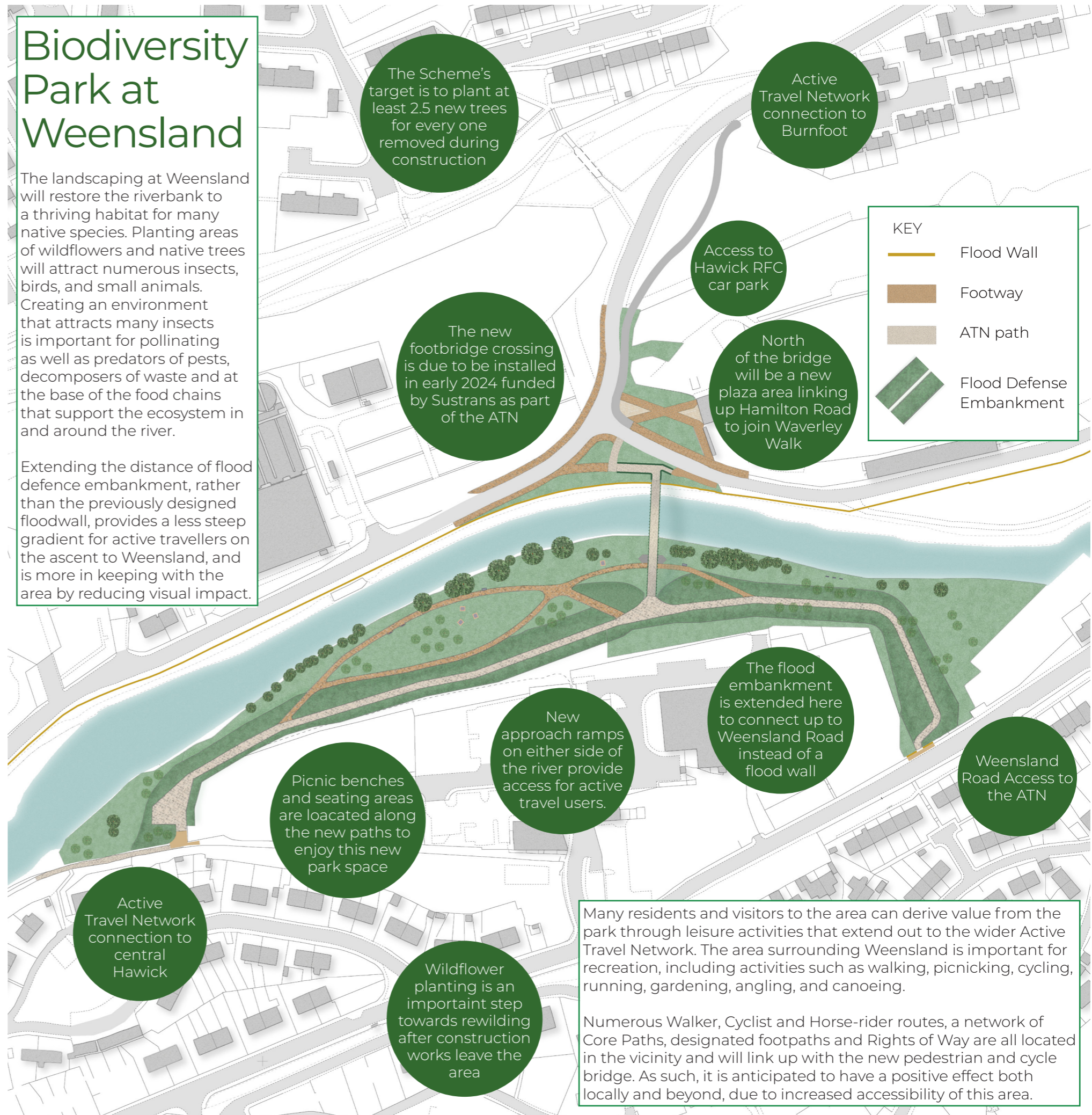
Christy, Yvonne & Kathryn of McL&H
Kathryn Speers was shortlisted for a CECA award. Yvonne nominated both candidates.



Biodiversity Park at Weensland

The landscaping at Weensland will restore the riverbank to a thriving habitat for many native species. Planting areas of wildflowers and native trees will attract numerous insects, birds, and small animals. Creating an environment that attracts many insects is important for pollinating as well as predators of pests, decomposers of waste and at the base of the food chains that support the ecosystem in and around the river.

Extending the distance of flood defence embankment, rather than the previously designed floodwall, provides a less steep gradient for active travellers on the ascent to Weensland, and is more in keeping with the area by reducing visual impact.



Biodiversity



“What is biodiversity?”

All the variety of life that can be found in one area.

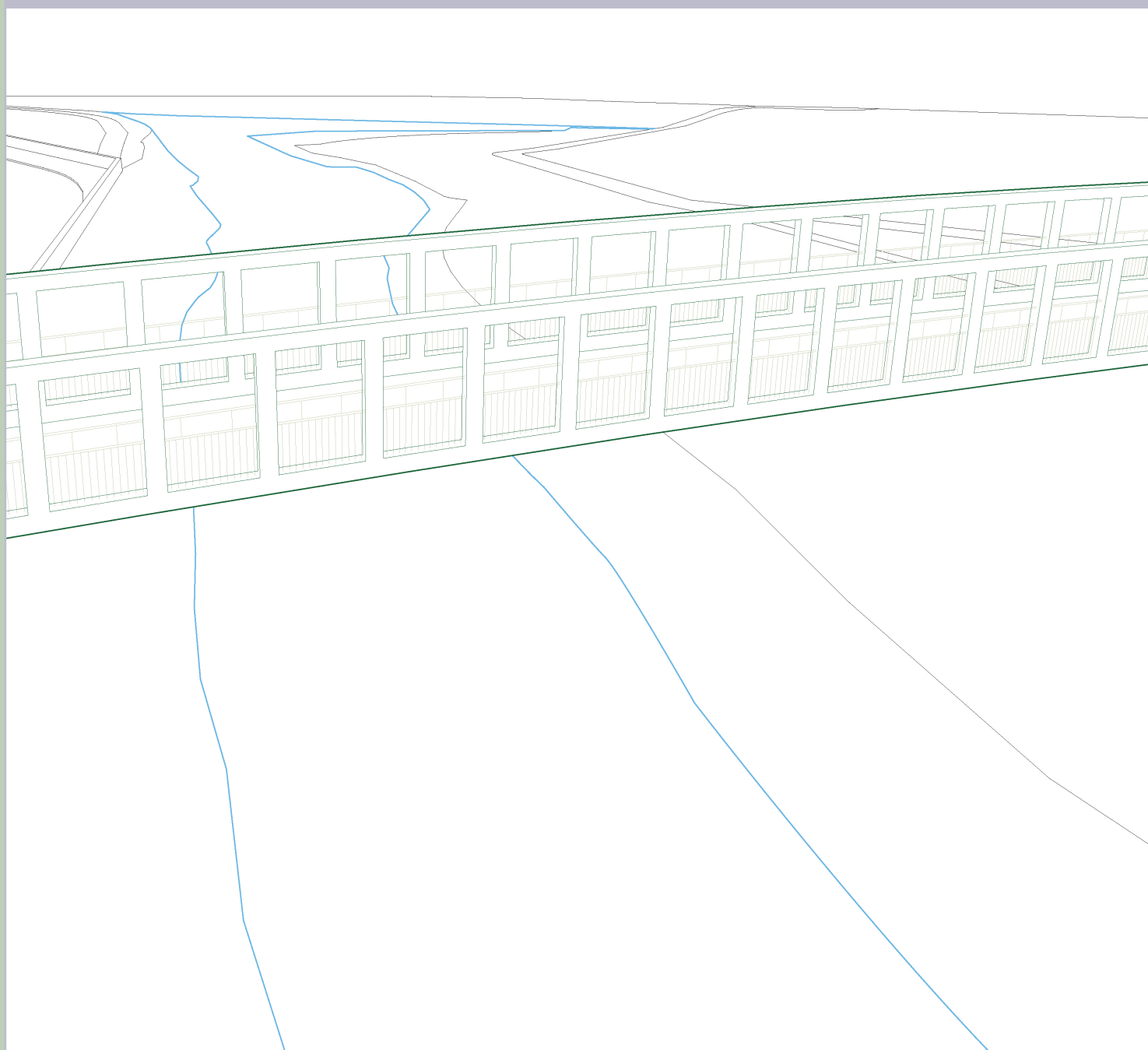
When there are a lot of different kinds of insects, birds, animals and plants in one environment they interact together to make a healthy ecosystem.



Wildflower meadow

Win a scooter!

Colour in this scene with wildflowers on the riverbank for a chance to win a children’s scooter, for ages 5 to 11 years old



*The competition is open to children living in and around Hawick email us a photo of your artwork by 10th July to enter ^{*see T&Cs}*

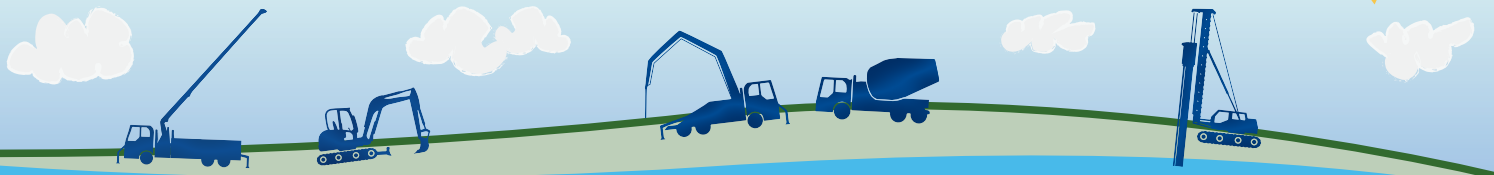
Hawick's Wee Explore

Welcome to the children's activity section.

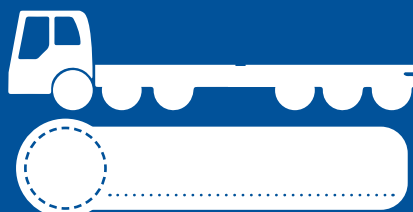
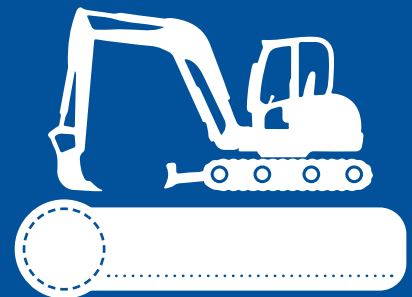
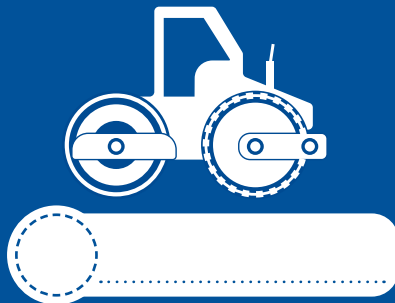
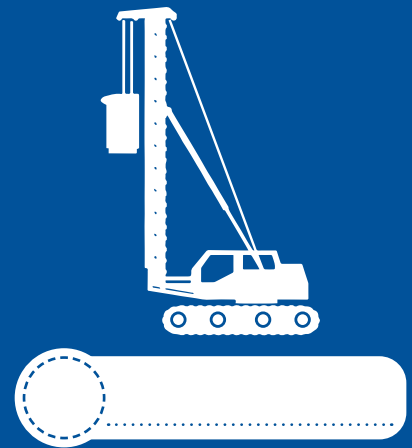
To see answers and the T&Cs for entering our competition visit: www.hawickfloodscheme.com/news

Email a photo of any completed activities to: hawickfloodps@scotborders.gov.uk

for the chance to win a scooter and appear in our online gallery. The biodiversity colouring competition is open to children living in and around Hawick aged between 5 - 11 years old.



Colour in any of these construction vehicles you have spotted around the town. Write down the number of each vehicle that you have seen and it's name:



Staying Connected to the River

During the design and consultation phase of the project it was clear that residents and stakeholders wished for the highest level of flood protection available but did not want to lose the physical and visual connection with the river.

In order to provide consistent town-wide flood protection along the Teviot to a 1 in 75 year level, the flood wall level and position varies throughout the town. In the town centre heading downstream, space is extremely limited due to the location of existing buildings and roads so the flood wall is positioned to accommodate the existing infrastructure. You may also have noticed that the flood wall steps up or down along a stretch of road due to

the ground level.

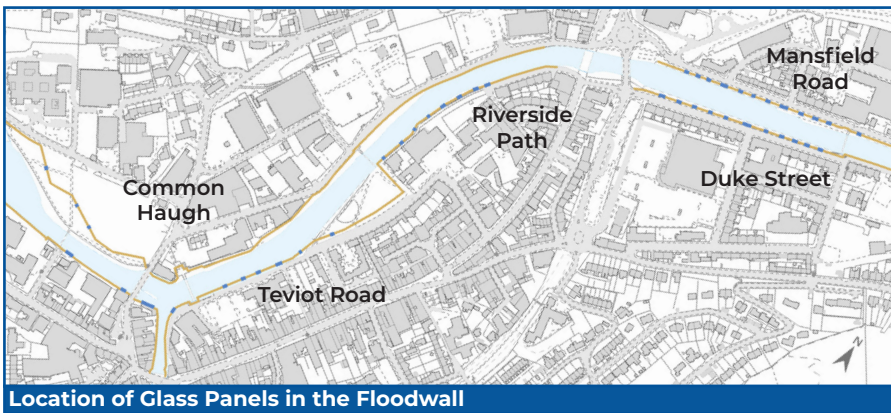
Space must be created elsewhere to offset these constrained areas. This has been achieved by effectively creating flood water storage areas at Volunteer Park, Common Haugh, Wee Haugh and Weensland as there is quite a distance between the river and flood wall in these locations.

These flood storage areas have been carefully planned to ensure robust hard landscaping using metal benches, concrete picnic tables and hardier planting as these areas are designed to flood. By setting the walls back these areas ensure physical connectivity to the river is maintained.




In normal river conditions these re-imagined landscaped areas are there to be used and enjoyed by everyone for leisure, picnics, events, exploring nature and other outdoor activities. The areas will only be restricted when the flood gates are closed in a flood event situation which we hope will be a rarity.

Where wall heights are slightly higher through the main stretch of the town due to limited space, the inclusion of over 70 glass panels provides a break in a continuous wall section and more importantly provides visibility to the river corridor and across to the opposite river bank. The glass panels (that all need to be tested once installed) can now be seen widely across the town with the surrounding stonework completion a key aspect of the finishing works.



Contacting the team

There are a number of ways you can keep up-to-date with the Hawick Flood Protection Scheme or contact the team to ask questions or provide comments:

 www.hawickfloodscheme.com
 hawickfloodps@scotborders.gov.uk

 @HawickFPS
 @hawickfloodprotectionscheme
 @hawick_flood_protection



Scottish Government
 Riaghaltas na h-Alba
gov.scot

CPE
 CONSULTANCY



Jacobs

sustrans
 JOIN THE MOVEMENT

Scottish Water
 Trusted to serve Scotland

