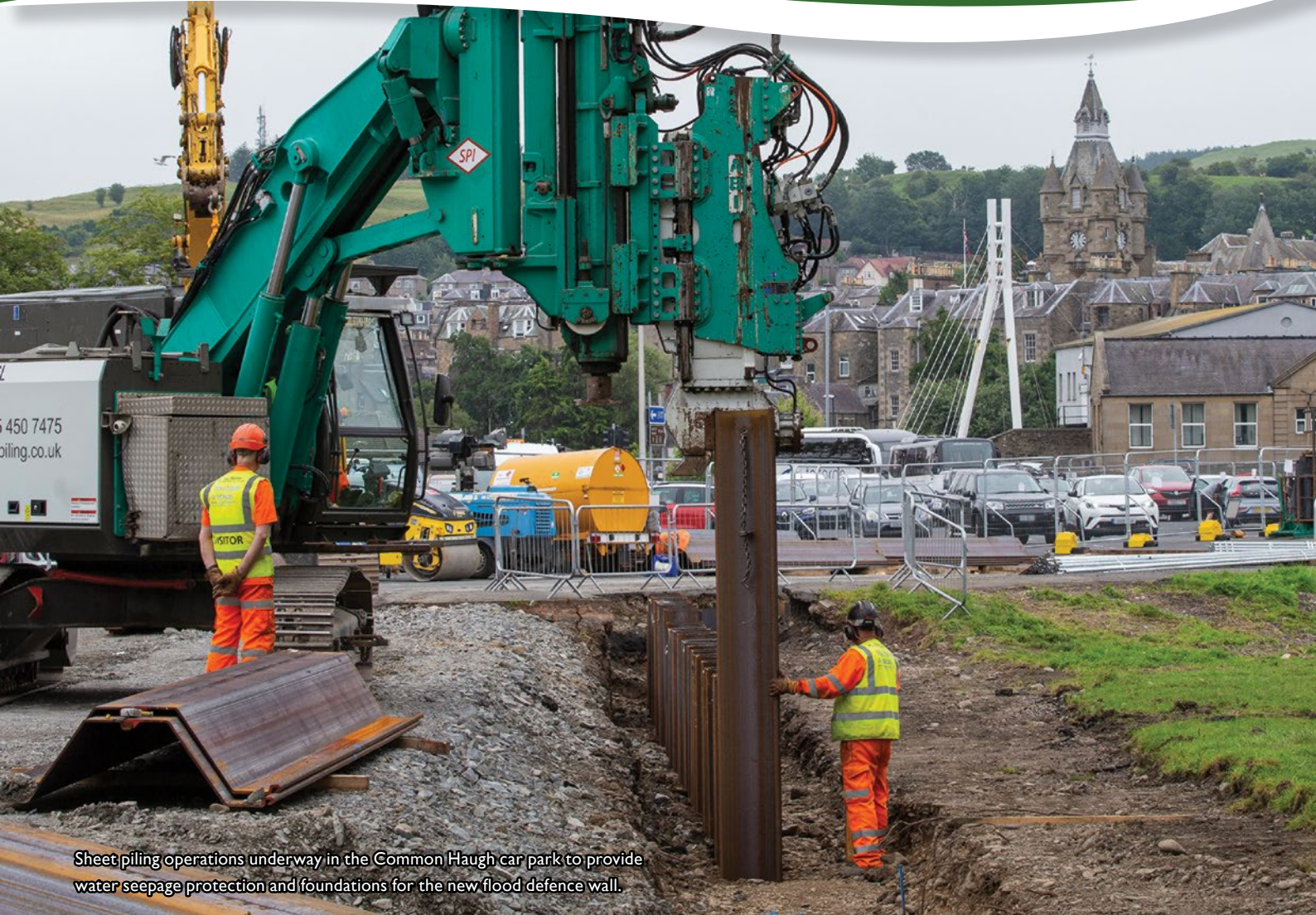


Project Update

October 2020



Sheet piling operations underway in the Common Haugh car park to provide water seepage protection and foundations for the new flood defence wall.

Advanced Works

A round up of the latest developments as the complex Advanced Works Contract nears completion.

Page 4

Main Works

We take a look at the significant progress being made on the main flood defence construction works.

Page 5

Commercial Road

Our priority is to keep access to all businesses open at all times despite necessary traffic diversions.

Page 6

Protecting and Enhancing Hawick

A Programme for Success

Post lockdown, good progress being made



In July, the partial easing of the Covid-19 restrictions allowed the resumption of construction activity. The prolonged period of lockdown has led to a delay in our plans, but it is now 'full steam ahead' to try to make up some of the time lost. In July, we approved main contractor McLaughlin & Harvey's detailed Programme of Works setting out the revised timescale for the completion of the flood defence construction works. These were published in the local press and are available on the Scheme's website. Our aim now is to complete the project by late 2023.

The enforced delay meant that we missed a large part of the first summer window in which we are allowed to work in the River Teviot. River working is restricted to between 1st May and 30th September each year for environmental and wildlife protection reasons. This led to a number of revisions in the Programme of Works designed to allow the maximum amount of construction work to get underway once lockdown restrictions allowed. These included breaking through the river wall by the High School and the installation of steel sheet pile foundations for the

new flood wall in the Common Haugh. All work is being carried out with regard to stringent safety, environmental and social distancing requirements. We continue to liaise closely with residents and businesses on how to minimise any disruption. That process will continue for the lifetime of the Scheme.

Main works contractor McLaughlin & Harvey are now fully mobilised on site and townsfolk can expect to see a rapid acceleration of construction activity from here on.

Perhaps the most obvious sign of the resumption of construction works has been the closure of the A7 Commercial Road to through traffic. This is part of the Advanced Works Contract interrupted by the pandemic outbreak. It involves the diversion of existing public utilities which will enable the main works contractor to build the flood defences unhindered. It is important to stress that all businesses along Commercial Road remain open as usual. Northbound A7 traffic has been diverted along Princes Street emerging at the Wilton Hill junction. Southbound traffic is being diverted along the High Street. We are grateful for the understanding

shown by people who appreciate that this vital flood protection project will unavoidably cause some temporary disruption. We pledge to do everything in our power to minimise any disruption to traffic flows in the town. A comprehensive network of static and variable message signs has been installed whose effectiveness we are constantly monitoring. Where improvements can be made, we are making them. Our aim is to have Commercial Road fully re-opened in time for the busy Christmas period.

The full team is now in place. We have the necessary expertise to make a success of what is one of the largest flood protection schemes underway anywhere in the UK. We are 100% focused on the task of progressing the works as fast as possible so that Hawick can at last be protected from the damaging flooding events with which it is all too familiar.

Conor Price
Project Director

01

Burnfoot traffic management measures delivered

02

Lower Mansfield public utility diversions completed

03

New Project site offices at Eastfield Road opened

For more information, log on to www.hawickfloodscheme.com

Reaching out to the Community

One of the early priorities laid down for the Hawick Flood Protection Scheme was that it should reach out and involve the local community in a broad and imaginative community engagement programme. The Client Team and the Main Works Contractor are taking a 'one team' approach to working together in order to create an exciting Community Engagement & Benefits Plan. Together, we aim to deliver a lasting, positive legacy for the local community that will bring tangible benefits throughout the lifetime of the Scheme as well as for many decades to come.

The Plan includes initiatives covering the following broad themes:

- education, training and development
- employment opportunities
- community group assistance
- adoption of the Sustrans Behavioural Change Plan to encourage active travel and promote a healthier lifestyle
- charity works and volunteering
- sustainability

It's early days yet, but we are working hard to define what we can offer in each of these areas in the months and years ahead. Examples of community initiatives to-date are:



Members of the McLaughlin & Harvey team move the flood relocated shed back into place

- **Borders Green Team** – use of a 50T Crawler crane and four operatives to relocate an 'out of place' shed caused by flooding earlier in the year
- **Developing Young Workforce** – we are supporting #NoWrongPath, a Scottish Government social media initiative aiming to motivate young people to be positive about the world of work
- **Wee Haugh** – use of plant equipment and three operatives over two days to create an aesthetic open space for use by local residents and businesses
- **Fundraising** – McLaughlin & Harvey's Section Manager, Mark Doyle, has raised over £5000 for Air Ambulance



Connie Rafferty from Hawick (on the right) spent 24 evenings in July and August running a 10k circuit around the Common Haugh, Wilton Park and Volunteer Park to raise funds for Pancreatic Cancer UK. After hearing of the Glasgow University student's efforts, the Hawick Flood Protection Scheme team and supply chain were delighted to help boost her fundraising efforts.

If you, your group, organisation or club would like to learn more about the Scheme's Community Engagement & Benefits Plan, then please do get in touch with Yvonne Gilfillan on [@mclh.co.uk](http://Hawick.Community)





Utility diversion works on Commercial Road

Advanced Works Nearing Completion

The final phase of the Advanced Works Contract resumed in late June after the Covid-19 lockdown period. The remaining significant works included the installation of traffic calming measures in Burnfoot, completion of service diversions on Lower Mansfield Road and the closure of a section of the A7 Commercial Road (see back page). The creation of a temporary footpath at Hamilton Road/Lower Mansfield is also due to commence.

Traffic calming measures in the form of formal parking bays and traffic islands were implemented along the length of Burnfoot Road as part of our works. Burnfoot Road is not included in any formal diversion route as part of the project but it is anticipated that road users may choose to use this route as an alternative to Mansfield Road once the main works commence in this location.

Service diversions at Lower Mansfield Road proved challenging with both Storm Ciara and Covid-19 restrictions to contend with. However,

the works were soon back on track with diversion works in this location now concluded. In anticipation of pedestrian restrictions on Lower Mansfield Road during the Main Works Contract, a temporary footpath will be created. This will form part of the Borders Abbey Way route for the duration of the project and will begin at Hamilton Road behind Hawick RFC grounds, re-joining the riverside footpath after the Council depot.

Since the commencement of the Advanced Works Contract in March 2018, great progress has been made in preparing the town for the construction of the flood defences. This has included approximately 19 kilometres of service diversions co-ordinated with the relevant providers, a temporary utility bridge constructed over the river Teviot, the creation of temporary access roads, tree felling and site clearance. This work has been invaluable in clearing the pathway to allow the main works to commence without hindrance.



Installation of new combined sewer outfall on Commercial Road



Reinstatement of road surface following combined sewer outfall installation



Coming Soon!

As soon as current Covid-19 restrictions allow, we will be opening our exciting new Project Information Centre at Bourtree Place. Townsfolk will be able to drop in to speak to a member of staff, hear about the latest news and progress on the works, pick up information leaflets and newsletters and view a 3D animation film of the completed works. Look forward to seeing you there!

Four Projects in One

The Hawick Flood Protection Scheme represents four significant projects in one:

- The flood protection works themselves
- A new, exciting Active Travel Network of footpaths and cycleways supported by Sustrans (subject to Transport Scotland funding)
- The upgrade to the A7 Commercial Road to make it fit-for-purpose in the 21st century
- A new, high capacity pumping station within the town's existing wastewater treatment works

Significant progress being made

In the first of a series of regular articles covering the main construction works, we cast an eye back at what has been going on since the last issue of the "Project Update" and take a look at what the people of Hawick can expect to see in the period ahead.

Much has been achieved in the first four months of the main works mobilisation phase:

- the main project offices were established at Eastfield Road along with compounds at the Common Haugh, Wee Haugh and Weensland.
- a number of pre-construction and environmental surveys were undertaken. Directly affected residents and businesses in the immediate works areas were consulted and informed of the works and how they may be affected by them.

- site boundary fencing was erected and works commenced on the south side of the River Teviot at Hawick High School, Buccleuch Park and Volunteer Park, with work running consecutively on the north side of the river at Victoria Road, Common Haugh and Commercial Road.
- significant construction progress has been made specifically in the Common Haugh, Victoria Road/Upper Common Haugh and Buccleuch Park areas with sheet piles driven into the ground and the commencement of the steel reinforced concrete defence wall.
- construction of the Active Travel Network from Coble Cauld to McLaren footbridge in Wilton Lodge Park is also well underway.



Sheet piling work underway in the Common Haugh car park

Looking to the period ahead, works will continue apace in the coming three months. This is scheduled to include the completion of the flood defence walls at Victoria Road, Common Haugh, Buccleuch Road and Buccleuch Park. Works will continue alongside the riverside path next to the High School. A flood gate will be installed at Common Haugh as well as a number of glass panels.

Works will also progress on the sheet pile core at the back of Commercial Road from James Thomson Footbridge working downstream towards Victoria Footbridge and construction of two of seven new underground pumping stations will commence.

On behalf of everybody at McLaughlin & Harvey, it is good to be making progress on this vital flood protection scheme on behalf of the people of Hawick. The entire project team thanks everybody for their patience and understanding whilst we undertake the works.



Sheet piling operations continuing in the Common Haugh car park

Commercial Road open for business

One of the biggest challenges for any civil engineering project being built through a town such as Hawick is to strike a balance between ensuring the work can be carried out safely and efficiently while minimising the impact on local people, businesses and road users.

There has been no bigger challenge than Commercial Road, where we had to divert over 3000m of pipes/cables/sewers for six different utility services, while ensuring that there was as little impact as possible for the local businesses and shops. In addition, we have had to deal with diverting all A7 traffic.

The Scheme's traffic management plan has been devised in

conjunction with local businesses and the residents of Hawick. The arrangements put in place mean that all the businesses served by Commercial Road have been able to stay open. Even then, once the present closure was put in place, lessons were learned and we were able to make changes based on your feedback. One such example was the need to enlarge the signs showing that all the businesses were open as usual.

Communication is the key, which is why you will have seen not only this newsletter but recent adverts in the Hawick Paper. Also, we regularly update our website www.hawickfloodscheme.com and posts via Facebook and Twitter.



Variable Message Sign on approach to Hawick from the A7 north

Phase 2 of the Commercial Road closure commenced on the 1st October which saw vehicle access to Aldi and Sainsbury's change: it is now via the North Bridge roundabout end of the road.

This means that we have been able to keep access open to all Commercial Road businesses.



Variable Message Sign located at North Bridge roundabout diverting A7 traffic



Signage on approach to Commercial Road advertising Businesses open as usual

Contacting the team

There are a number of ways you can keep up-to-date with the Hawick Flood Protection Scheme or contact the team to ask questions or provide comments:

📍 www.hawickfloodscheme.com
✉ hawickfloodps@scotborders.gov.uk

🐦 @HawickFPS
📘 @hawickfloodprotectionscheme
📷 @hawick_flood_protection

